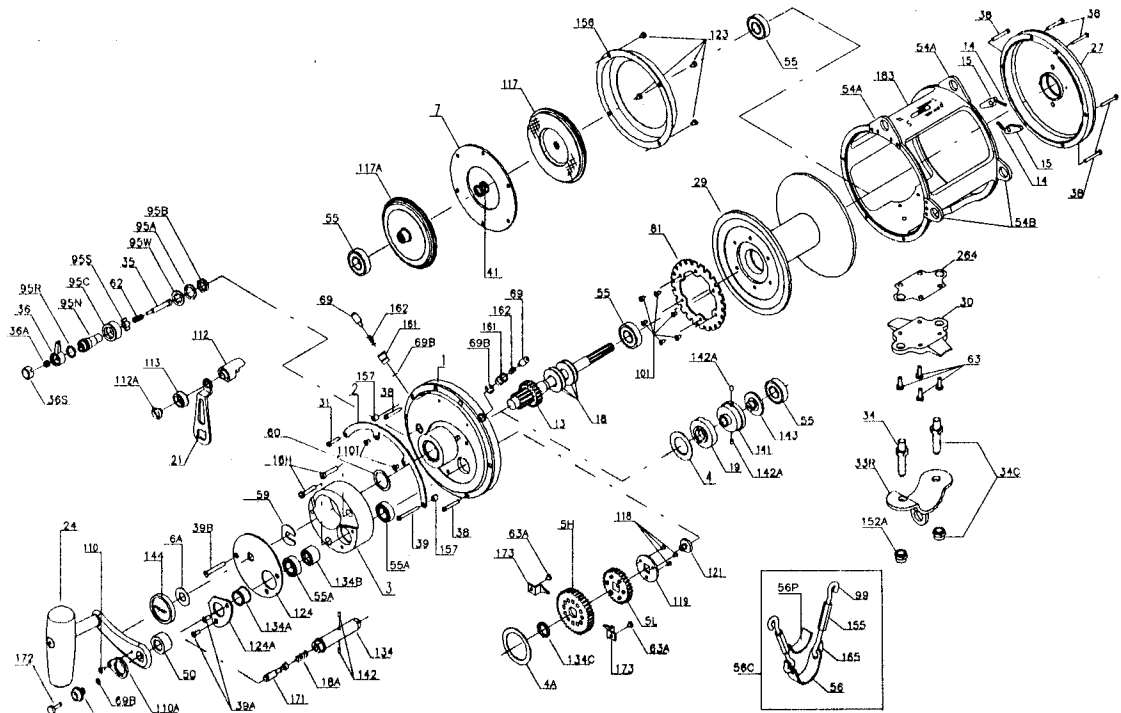




PARTS AND PRICE LIST FOR MODELS 80ST AND 80STW



Key No.	Part No.	Description	Price	Key No.	Part No.	Description	Price
1	001N080ST	Right-Side Plate Assembly	\$109.50	69	069 050	Locating Pin (2 req.)	\$1.20
2	002 080	Quadrant Ring	8.00	69B	069B050	Retaining Ring (3 req.)	.80
3	003 080ST	Bridge	26.00	81	081 080S	Ratchet	6.75
4	004 080	Cam Thrust Washer	1.10	95A	095A020	Click Bushing Washer	.65
4A	004 130	Gear Thrust Washer	1.25	95B	038 710	Click Bushing Nut	.50
5H	005 080HST	Main Gear High-Speed	19.00	95C	095C080ST	Click Adjustment Ring	3.00
5L	005 080LST	Main Gear Low-Speed	25.00	95N	095N080ST	Click Tongue Bushing	5.00
6A	006 155	Spacer Washer	.60	95F	095F080ST	Click O-Ring	.60
7	007A080	Metal Drag Washer	17.50	95S	095S080ST	Click Spring Slider	1.25
13	013 080ST	Pinion Gear	45.00	95W	095W080ST	Eared Spring Washer	.75
	013 080STW	Pinion Gear	48.00	99	099 116	Harness Lug Screw Hook (Upper) (2 req.)	1.30
14	049 710	Dog Spring (2 req.)	.50	101	101 030	Ratchet Screw (6 req.)	.45
15	015 130	Dog (2 req.)	2.00	110	110 050	Handle Lock Screw	.50
16H	016T130	Hidden Bridge Screws (2 req.)	.55	110A	110A050	Handle Locking Plate	2.40
18	018 080W	Disc Clutch Spring (4 req.)	1.55	110T	110T050	Quadrant Screw (2 req.)	.50
18A	018 349	Gear Stud Spring	.45	112	112 050	Eccentric Knob	16.25
19	019H080	Eccentric Cam	14.35	112A	112A050	Eccentric Knob Screw	.90
21	021 080ST	Eccentric Lever	8.45	113	113 050	Eccentric Lever Cap	3.95
23	023 080ST	Handle Screw	3.75	117	117 080ST	Drive Plate (Outer)	24.00
24	024 080ST	Handle Complete	37.00	117A	117A080T	Drive Plate (Inner)	21.00
27	027 080ST	L.S. Plate Assembly	102.50	118	101 080ST	Coupling Plate Screw (3 req.)	.50
29	029L080S	Spool	123.00	119	119 080ST	Coupling Plate	1.40
	029L080SW	Spool	136.00	121	121 080ST	Gear Stud Screw	1.75
30	030 080S	Stand	30.00	123	123 050	Drag Cover Screw (4 req.)	.45
31	031T 20	Short Quadrant Screw	.55	124	124 080ST	Bridge Cover	7.25
33R	033 130ST	Rod Clamp	21.00	124A	124A080ST	Bearing Cover	7.10
34	034 080T	Clamp Screw (2 req.)	2.25	*	*125 080ST	Cam Housing	12.00
34C	034C080T	Rod Clamp Screw w/Nut	3.70	134N	134N080ST	Gear Stud	13.50
35	035 080ST	Click Tongue	3.25	134A	134A080ST	Bushing	2.50
36	036 080ST	Click Button	7.10	134B	134B080ST	Grooved Spacer Bushing	7.50
36A	036 700	Click Button Nut	.90	134C	134C080ST	Gear Bushing	1.05
36S	036S080ST	Click Button Cap	.40	141	141 080	Cam Follower	7.00
38	038T050	Frame Screw	.50	142	142 050	Gear Stud Pin (2 req.)	.60
39	039 050	Long Quadrant Screw	1.00	142A	142 080ST	Cam Follower Pins (2 req.)	.60
39A	039A080S	Cover Screws (2 req.)	.45	143	143 080	Adjusting Screw	4.50
39B	039 080ST	Cover Screw	.50	144	144 050	Preset Knob	6.95
41	041 050	L.S. Bearing Spring	.90	152A	152A080T	Rod Clamp Acorn Nut	1.45
50	050 080ST	Shield	2.10	155	155 116	Turnbuckle (2 req.)	1.65
54A	054A080S	Top Harness Lug (2 req.)	4.15	156	156 080S	Drag Cover	5.75
54B	054B080S	Harness Lug (2 req.)	4.15	157	157 050	Quadrant Spacer Bushing (2 req.)	.60
55	055 080	Ball Bearing (4 req.)	16.00	161	161 050	Locating Pin Bushing (2 req.)	1.20
55A	055 080ST	Ball Bearing (2 req.)	17.50	162	162 050	Locating Pin Spring (2 req.)	.50
56	056 116	Rod Brace	5.95	165	165 116	Harness Lug Screw Hook (Lower) (2 req.)	1.30
56C	056C116	Rod Brace Assembly (Complete)	14.45	171	171 080ST	Plunger	3.35
59	059 050	Slotted Washer	.80	172	172N080S	Plunger Cap	2.85
60	060 050	Backing Washer	.90	173	173 050S	Gear Retainer	1.35
62	062 050	Click Spring	.80	183	183 080ST	Tube Frame	117.00
63	063 030T	Stand Screw (4 req.)	.80		183 080STW	Tube Frame	131.00
63A	063 349	Hold Down Screw (4 req.)	.80	264	264 080T	Stand Gasket	1.90